

Data summary

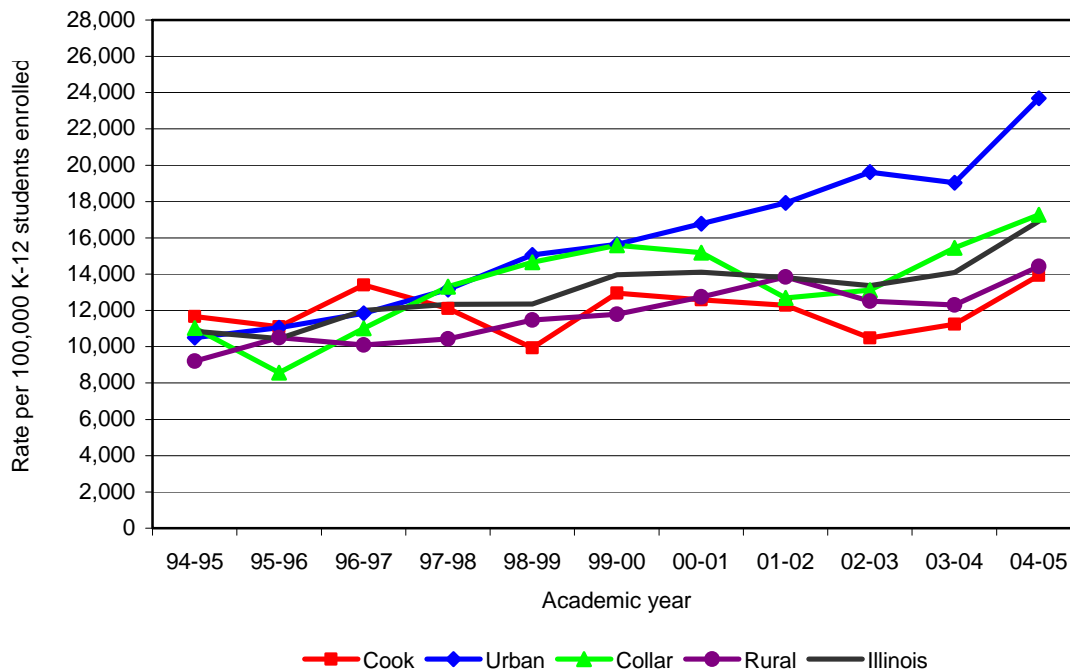
School context

Data elements used to determine school environment included the number of students who were truant, chronically truant, suspended, suspended more than once, expelled, dropouts, and truant minors in need of supervision. Also included were reported crimes against school personnel. All data were collected on youth enrolled in public schools in Illinois, with the exception of reported crimes against school personnel.

Truancy

In Illinois, students are considered **truant** if they have been absent from school without valid cause for one or more days during the academic year (AY). In Illinois, 341,792 youth were considered truant during AY04-05, a 22 percent increase from the 279,755 students who were truant during AY99-00.

Figure 7
Rate of youth reported truant per 100,000 K-12 students enrolled, by county classification, AY94-95 to AY04-05

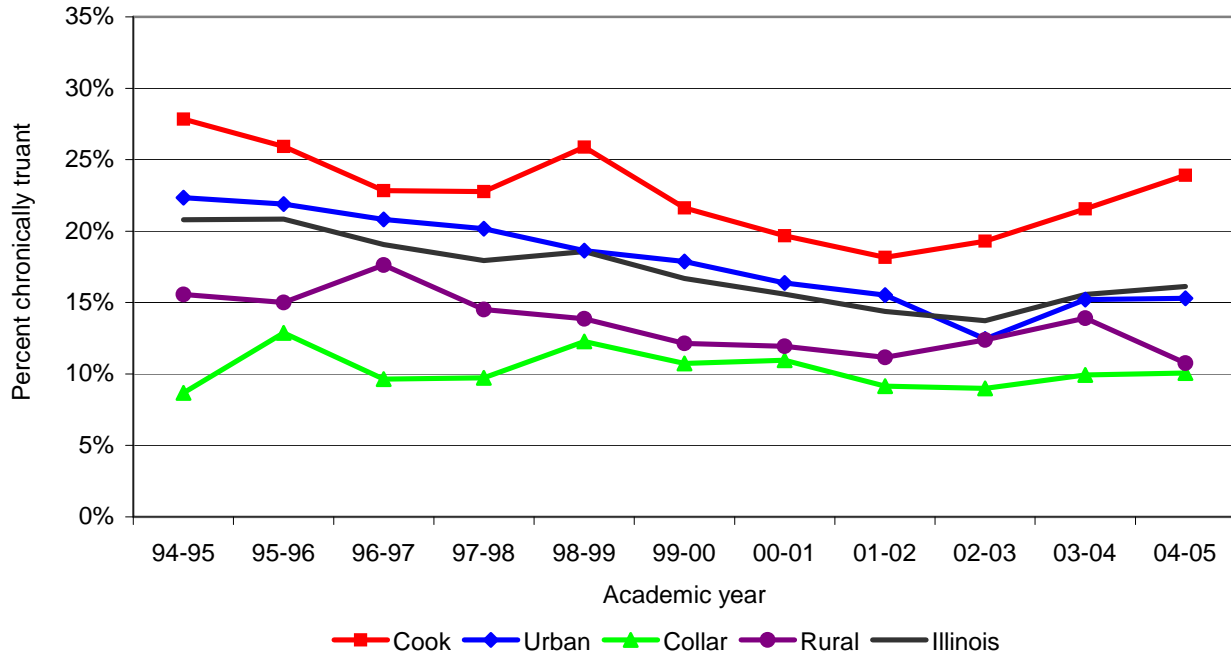


Source: Illinois State Board of Education

Figure 7 depicts the rate of truancy by county classification for AY94-95 through AY04-05. **Truancy programs** are often made available to these students. The statewide truancy rate for

academic year 2004-05 was 16,909 per 100,000 enrolled students. This represents a 21 percent increase in the statewide truancy rate from 13,961 in AY99-00.

Figure 8
Percent of K-12 truant students chronically truant, by county classification, AY94-95 to AY04-05



Source: Illinois State Board of Education

Chronic truants are students who habitually violate compulsory school attendance law by being absent from school without valid cause for 18 or more school days. **Chronic truant programs** are often made available to these students, which may include mentoring, crisis intervention, family counseling, and academic counseling. Of those truant during AY04-05, 55,113 were chronically truant (16 percent).

An 18 percent increase was seen in the number of chronic truants from AY94-95 to AY04-05 (*Figure 8*). However, this increase is more recent. The statewide percentage of chronic truants declined steadily from AY98-99 through AY02-03. A 50 percent increase in the number of chronic truants was seen from AY02-03 to AY04-05.

Truant minors in need of supervision

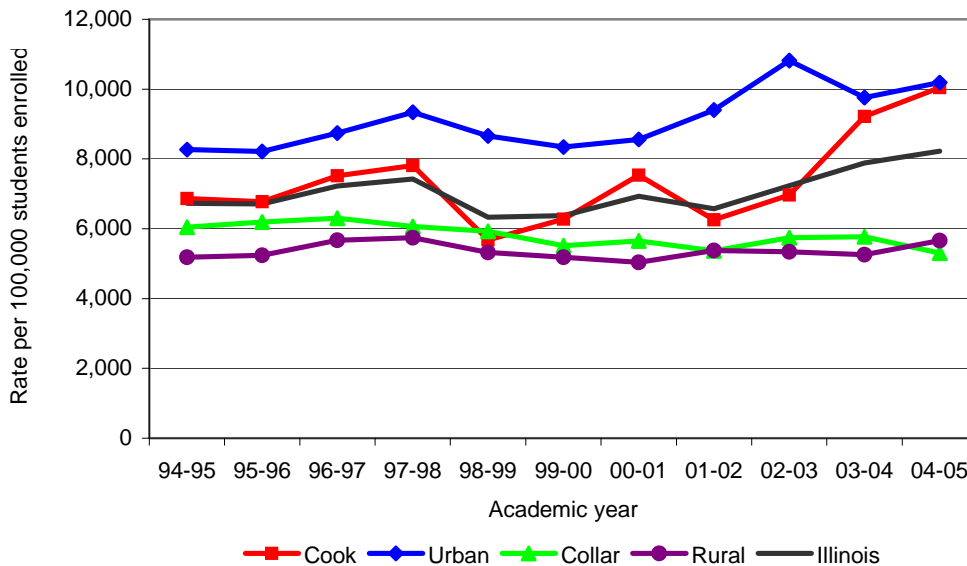
Truant minors in need of supervision are students ages seven to 17 attending grades K-12 who are reported by a regional superintendent of schools, or by the Office of Chronic Truant Adjudication in cities of more than 500,000 inhabitants, as chronic truants (705 ILCS 405/3-33). In Illinois, there were 22,599 truant minors in need of supervision during AY04-05, representing a 1 percent decrease from the 22,940 recorded during AY99-00. The statewide rate of truant

minors in need of supervision during the 2004-05 academic year was 1,118 per 100,000 enrolled students, a 2 percent rate decrease from AY99-00.

Suspensions

During AY04-05, 166,240 students were suspended from school, a 30 percent increase from 127,771 AY99-00.

Figure 9
Rate of youth suspended per 100,000 K-12 students enrolled by county classification, AY94-95 to AY04-05



Source: Illinois State Board of Education

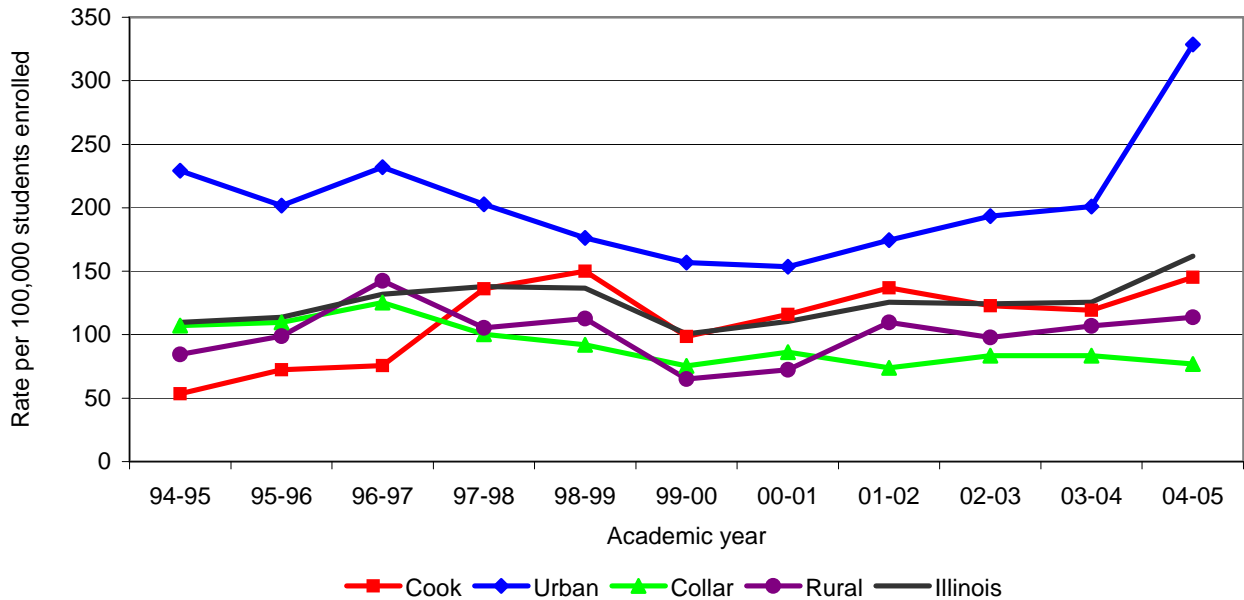
Suspension rates of students increased from AY94-95 to AY04-05. In AY04-05, the rate of suspensions was 8,224 per 100,000 enrolled students. *Figure 9* shows the suspension rate for students enrolled in kindergarten through high school by county classification for AY95-05 through AY04-05.

The statewide suspension rate for AY04-05 was 8,224 per 100,000 enrolled students. Of those suspended during AY04-05, 67,960 were suspended more than once (41 percent). Alexander County had a suspension rate that was almost three times the statewide rate.

Expulsions

During AY04-05, 3,271 students were expelled from school, a 62 percent increase from the 2,017 expelled in AY99-00.

Figure 10
Rate of youth expelled per 100,000 K-12 students enrolled, by county classification, AY94-95 to AY04-05



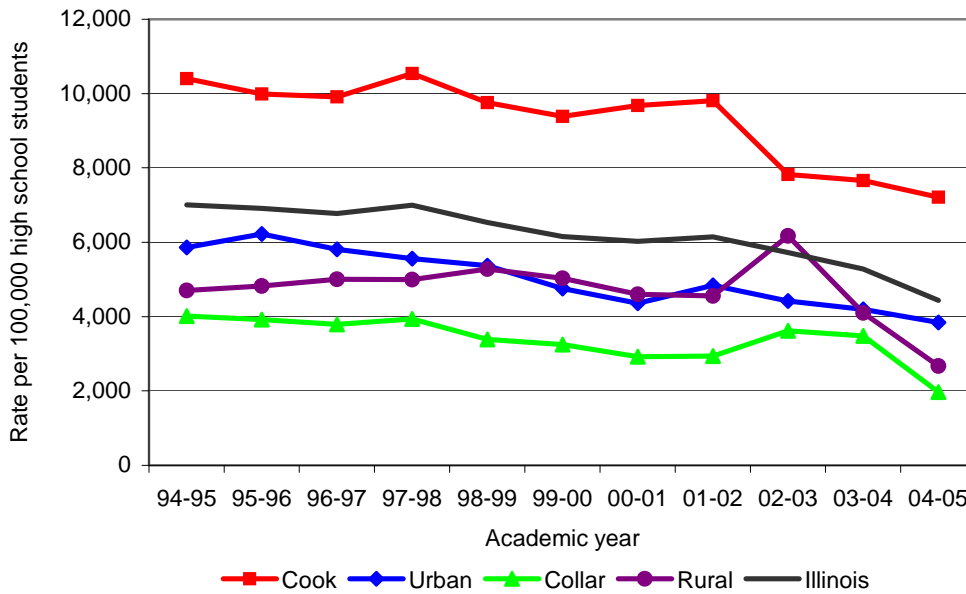
Source: Illinois State Board of Education

Rate increases were seen in students expelled and students who dropped out of school from AY94-95 to AY04-05 (*Figure 10*). The statewide expulsion rate for AY04-05 was 162 per 100,000 enrolled students. This represents a 48 percent increase in the statewide rate of expulsions, from 110 per 100,000 enrolled students in AY94-95. Urban counties experienced a 64 percent rate increase in their rates of expulsions from 201 in AY03-04 to 329 in AY04-05. During the 2004-05 school year, Peoria County had an expulsion rate that was five times the statewide rate.

Dropouts

During AY04-05, there were 27,066 high school student dropouts, which was a decrease of 19 percent from the 33,328 high school students who dropped out during AY99-00.

Figure 11
Rate of high school student dropouts per 100,000 high school students enrolled, by county classification, AY94-95 to AY04-05



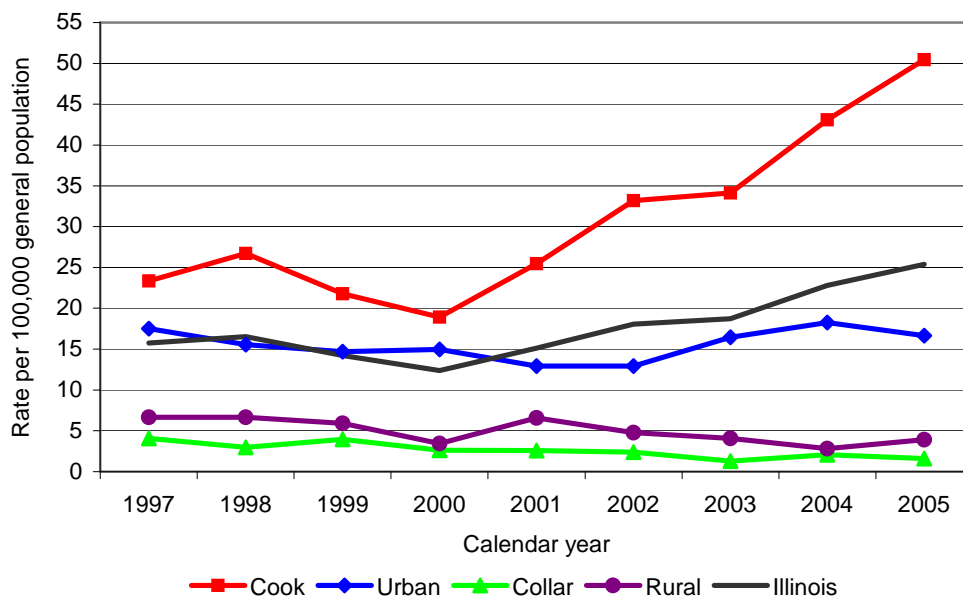
Source: Illinois State Board of Education

There was a statewide decrease in the rate of high school **dropouts** from AY99-00 to AY04-05 (*Figure 11*). In academic year 2004-05, the rate of dropouts was 4,435 per 100,000 high school students. The statewide dropout rate for AY04-05 was 4,435 per 100,000 students enrolled in high school.

Crimes against school personnel

Crimes against school personnel are defined as crimes committed against teachers, administrative personnel, or educational and other support personnel who are employed by a school. The reporting of crimes against school personnel to the Illinois State Police became mandatory for police departments in Illinois beginning in April 1996. Reported crimes against school personnel rose significantly from 2000 to 2005. In 2005, 3,242 crimes against school personnel were reported to the I-UCR supplemental data-reporting program, a 110 percent increase from the 1,541 crimes reported in 2000.

Figure 12
Rate of reported crimes against school personnel per 100,000 persons in the general population by county classification, 1997 – 2005



Source: Illinois State Police

The rate of crimes against school personnel in 2005 was 26 crimes per 100,000 persons in the general population (*Figure 12*. Data prior to 1997 were unavailable.).

Cook County experienced a 167 percent increase in its rate, from 19 crimes per 100,000 persons in the general population in 2000, to 50 in 2005. These findings might be indicative of a change in reporting practices and may not necessarily be reflective of a higher rate of crimes against school personnel alone. However, in 2005, 67 counties reported no crimes against school personnel to the Illinois State Police.

Appendix H: Data tables section

The following data tables include county-level detail for several dozen juvenile justice data elements. When available, some data elements were also broken down by demographics, such as age, race, and gender. Data is provided by calendar year, academic year, or Fiscal Year, depending upon the reporting agency. Whenever possible, both 1999 and 2004 data were included.

Many caveats have been mentioned throughout this report regarding the interpretation of the following data. The bullet points below describe additional issues that should be considered when reviewing the data tables.

- If there is a blank space where data should be, then data were not available.
- When zero (0) is listed for a particular data element, there are two interpretations
 - There were zero instances of that particular event occurring.
 - Zero instances of that particular event were reported.

For instance: A zero appears for Greene County in the youth arrests table. This could be interpreted as Greene County not having any youth arrests for 2004, or that Greene County did not report any youth arrests to the Illinois State Police, but actually did arrest juveniles.

Whenever possible, rates were calculated by using the population most appropriate to the data element. For example, youth incarceration rates were calculated using the youth population 13-16 since a youth under the age of 13 cannot be incarcerated in an Illinois Youth Center, and youth 17 or older are considered adults in Illinois.

List of tables

Table 14: Number of students reported truant, AY99-00 – AY04-05	145
Table 15: Number of students suspended, AY99-00 – AY04-05	147
Table 16: Number of students expelled, AY99-00 – AY04-05	149
Table 17: Number of high school dropouts, AY99-00 – AY04-05	151
Table 18: Number and sex of truant minors in need of supervision, AY99-00 – AY04-05.....	153
Table 19: Number of reported crimes against school personnel, CY00 – CY05	155

Table 14: Number of students reported truant, AY 1999-00 – AY 2004-05

Source: Illinois State Board of Education

Rate per 100,000 Students K-12 Enrolled

County	1999-00 Total Truant	Rate	Number Chronic Truant	Percent Chronic	2004-05 Total Truant	Rate	Rank	Number Chronic Truant	Percent Chronic
Adams	1,412	13,550	138	10%	2,453	26,076	13	241	10%
Alexander	547	32,696	171	31%	509	41,483	3	57	11%
Bond	73	3,087	24	33%	86	3,819	97	8	9%
Boone	1,193	15,625	151	13%	1,831	19,627	29	207	11%
Brown	146	17,980	13	9%	37	5,263	89	8	22%
Bureau	359	5,735	44	12%	436	7,939	73	53	12%
Calhoun	40	5,556	19	48%	165	24,775	16	5	3%
Carroll	137	4,318	14	10%	167	6,222	81	21	13%
Cass	258	11,366	31	12%	153	7,123	75	111	73%
Champaign	1,297	5,427	421	32%	6,462	28,208	10	480	7%
Christian	519	9,450	69	13%	580	10,727	61	111	19%
Clark	644	20,674	22	3%	510	17,154	37	25	5%
Clay	513	18,826	67	13%	339	14,226	46	50	15%
Clinton	799	14,099	139	17%	337	6,495	78	54	16%
Coles	1,282	18,110	156	12%	1,903	28,002	11	173	9%
Cook	103,389	12,958	22,360	22%	109,171	13,925	47	26,112	24%
Crawford	180	4,992	41	23%	214	6,742	77	77	36%
Cumberland	27	1,309	9	33%	29	1,595	102	11	38%
DeKalb	1,649	10,862	120	7%	2,166	13,360	53	137	6%
DeWitt	237	7,199	23	10%	391	13,846	48	22	6%
Douglas	62	1,972	13	21%	175	6,223	80	11	6%
DuPage	17,489	11,415	876	5%	13,960	8,767	68	739	5%
Edgar	314	8,443	42	13%	419	12,980	54	49	12%
Edwards	14	1,302	6	43%	41	4,289	96	22	54%
Effingham	266	4,102	31	12%	357	5,902	83	29	8%
Fayette	572	17,312	61	11%	513	16,803	39	132	26%
Ford	409	16,512	34	8%	557	21,955	24	32	6%
Franklin	646	9,906	126	20%	1,403	22,341	22	97	7%
Fulton	1,315	22,318	124	9%	1,238	23,253	19	143	12%
Gallatin	44	4,305	23	52%	145	16,802	40	79	54%
Greene	203	8,091	13	6%	158	7,130	74	19	12%
Grundy	1,030	12,630	102	10%	1,127	11,549	55	112	10%
Hamilton	110	7,790	31	28%	67	5,465	86	20	30%
Hancock	362	9,095	70	19%	283	8,363	70	26	9%
Hardin	79	11,826	18	23%	33	4,860	92	6	18%
Henderson	398	32,570	22	6%	383	36,166	6	15	4%
Henry	565	5,906	78	14%	555	6,378	79	84	15%
Iroquois	366	6,547	57	16%	253	5,088	91	91	36%
Jackson	1,087	13,692	130	12%	1,064	14,516	45	161	15%
Jasper	365	20,471	5	1%	81	5,422	88	9	11%
Jefferson	911	13,591	142	16%	1,425	23,829	17	189	13%
Jersey	153	4,778	37	24%	1,167	41,208	5	40	3%
JoDaviess	167	4,617	32	19%	66	2,070	101	11	17%
Johnson	129	7,131	15	12%	107	6,196	82	36	34%
Kane	13,781	14,141	1,489	11%	28,570	25,923	15	1,928	7%
Kankakee	4,791	25,882	420	9%	4,183	23,001	20	385	9%
Kendall	1,230	11,939	113	9%	3,523	22,006	23	141	4%
Knox	887	10,824	131	15%	1,302	17,042	38	241	19%
Lake	35,917	29,442	4,720	13%	24,607	18,290	34	2,955	12%
LaSalle	1,884	10,876	322	17%	1,613	9,744	65	240	15%
Lawrence	365	14,862	147	40%	333	14,573	44	28	8%

Table 14: Number of students reported truant, AY 1999-00 – AY 2004-05

County	1999-00 Total Truant	Rate	Number Chronic Truant	Percent Chronic	2004-05 Total Truant	Rate	Rank	Number Chronic Truant	Percent Chronic
Lee	524	9,491	39	7%	698	13,729	50	67	10%
Livingston	619	8,081	46	7%	587	8,080	72	42	7%
Logan	460	11,646	124	27%	311	8,634	69	101	32%
McDonough	486	11,753	111	23%	685	19,394	31	79	12%
McHenry	4,157	9,681	130	3%	5,093	10,130	64	225	4%
McLean	1,835	7,985	125	7%	1,023	4,573	94	182	18%
Macon	1,407	7,597	95	7%	5,758	34,405	7	640	11%
Macoupin	827	8,401	123	15%	971	10,781	60	113	12%
Madison	9,795	22,640	1,722	18%	8,564	20,644	25	1,296	15%
Marion	1,341	16,665	152	11%	1,362	18,546	33	162	12%
Marshall	113	6,832	24	21%	129	8,958	67	10	8%
Mason	269	7,539	71	26%	303	9,472	66	44	15%
Massac	421	15,941	28	7%	448	18,152	35	22	5%
Menard	180	6,338	19	11%	113	4,544	95	21	19%
Mercer	176	10,156	0	0%	153	10,422	62	28	18%
Monroe	456	10,210	21	5%	123	2,603	99	20	16%
Montgomery	334	6,029	62	19%	315	6,779	76	48	15%
Morgan	835	14,839	101	12%	981	19,319	32	109	11%
Moultrie	124	6,714	16	13%	299	15,209	43	10	3%
Ogle	1,381	13,194	44	3%	1,381	13,450	52	134	10%
Peoria	5,677	19,416	1,239	22%	8,343	29,570	9	1,319	16%
Perry	225	7,272	42	19%	388	13,628	51	44	11%
Piatt	139	4,064	7	5%	109	3,407	98	10	9%
Pike	754	24,159	49	6%	535	19,800	28	48	9%
Pope	38	5,697	26	68%	328	61,194	2	3	1%
Pulaski	668	44,742	97	15%	294	26,064	14	66	22%
Putnam	104	10,068	2	2%	49	5,432	87	7	14%
Randolph	498	10,480	101	20%	586	13,775	49	73	12%
Richland	604	21,821	30	5%	1,000	41,322	4	26	3%
Rock Island	2,824	11,343	655	23%	5,471	23,748	18	681	12%
St. Clair	7,910	17,053	1,860	24%	7,282	16,602	41	1,576	22%
Saline	707	15,838	166	23%	718	17,821	36	112	16%
Sangamon	5,823	20,284	700	12%	7,500	27,376	12	1,068	14%
Schuyler	162	13,478	5	3%	110	10,261	63	0	0%
Scott	30	2,887	7	23%	45	4,757	93	8	18%
Shelby	414	9,511	28	7%	403	11,336	57	39	10%
Stark	60	4,910	17	28%	27	2,586	100	21	78%
Stephenson	1,251	15,698	144	12%	1,632	22,635	21	105	6%
Tazewell	1,034	5,174	110	11%	1,081	5,646	85	105	10%
Union	309	8,801	69	22%	358	11,272	58	54	15%
Vermilion	1,949	13,607	383	20%	2,804	20,505	26	503	18%
Wabash	217	9,882	25	12%	216	11,545	56	47	22%
Warren	177	5,682	44	25%	225	8,236	71	30	13%
Washington	223	9,546	20	9%	225	10,981	59	30	13%
Wayne	159	5,286	32	20%	135	5,168	90	37	27%
White	437	15,590	78	18%	475	19,571	30	64	13%
Whiteside	1,333	12,847	111	8%	2,899	30,369	8	118	4%
Will	3,698	4,767	491	13%	20,704	20,418	27	3,210	16%
Williamson	1,703	17,945	250	15%	1,465	15,628	42	141	10%
Winnebago	13,931	31,754	3,300	24%	28,980	64,770	1	6,100	21%
Woodford	345	4,536	46	13%	461	5,894	84	82	18%
Total	279,755	13,961	46,649	17%	341,792	16,909		55,113	16%

Table 15: Number of students suspended, AY 1999-00 – AY 2004-05Source: Illinois State Board of Education
Rate per 100,000 Students K-12 Enrolled

County	1999-00 Total Suspended	Rate	More than 1 suspension	2004-05 Total Suspended	Rate	Rank	More than 1 suspension
Adams	431	4,136	141	619	6,580	32	295
Alexander	198	11,835	95	296	24,124	1	129
Bond	117	4,947	54	146	6,483	35	54
Boone	485	6,352	186	560	6,003	49	229
Brown	29	3,571	11	7	996	102	3
Bureau	312	4,984	112	247	4,497	76	96
Calhoun	7	972	2	14	2,102	100	2
Carroll	198	6,240	58	169	6,297	44	70
Cass	87	3,833	125	181	8,426	18	90
Champaign	1,331	5,569	463	1,731	7,556	22	607
Christian	361	6,573	155	356	6,584	31	132
Clark	124	3,981	47	95	3,195	92	43
Clay	84	3,083	33	159	6,672	30	73
Clinton	96	1,694	26	65	1,253	101	11
Coles	274	3,871	89	366	5,386	59	162
Cook	50,067	6,275	18,937	78,729	10,042	9	30,744
Crawford	122	3,383	32	147	4,631	70	51
Cumberland	87	4,217	33	47	2,585	97	12
DeKalb	794	5,230	289	760	4,688	69	250
DeWitt	180	5,468	62	203	7,188	24	107
Douglas	68	2,163	21	75	2,667	95	14
DuPage	5,954	3,886	2,263	5,475	3,438	91	1,744
Edgar	83	2,232	16	148	4,585	73	35
Edwards	42	3,907	14	50	5,230	61	12
Effingham	144	2,221	47	154	2,546	98	48
Fayette	168	5,085	69	194	6,354	41	76
Ford	156	6,298	64	145	5,715	53	61
Franklin	286	4,386	73	301	4,793	67	102
Fulton	339	5,754	151	306	5,748	52	117
Gallatin	71	6,947	20	56	6,489	33	22
Greene	75	2,989	12	62	2,798	94	11
Grundy	432	5,297	211	418	4,284	79	128
Hamilton	59	4,178	19	74	6,036	47	17
Hancock	192	4,824	83	78	2,305	99	15
Hardin	65	9,731	21	60	8,837	16	24
Henderson	35	2,864	10	47	4,438	77	19
Henry	504	5,269	227	557	6,401	37	252
Iroquois	349	6,243	162	341	6,858	27	144
Jackson	447	5,630	149	612	8,349	19	260
Jasper	73	4,094	26	73	4,886	65	38
Jefferson	704	10,503	356	408	6,823	28	213
Jersey	96	2,998	24	165	5,826	51	68
JoDavie	118	3,262	36	96	3,011	93	34
Johnson	76	4,201	13	90	5,211	62	32
Kane	6,686	6,861	2,820	7,804	7,081	25	3,393
Kankakee	1,812	9,789	923	1,771	9,738	12	879
Kendall	493	4,785	173	795	4,966	64	287
Knox	523	6,382	195	655	8,573	17	265
Lake	5,962	4,887	2,205	6,739	5,009	63	2,503
LaSalle	1,079	6,229	509	916	5,534	55	380
Lawrence	122	4,967	65	126	5,514	56	42

Table 15: Number of students suspended, AY 1999-00 – AY 2004-05

County	1999-00 Total Suspended	Rate	More than 1 suspension	2004-05 Total Suspended	Rate	Rank	More than 1 suspension
Lee	330	5,977	157	329	6,471	36	156
Livingston	344	4,491	111	351	4,831	66	129
Logan	262	6,633	115	218	6,052	46	96
McDonough	174	4,208	59	229	6,484	34	111
McHenry	1,703	3,966	697	2,000	3,978	83	776
McLean	1,270	5,526	579	1,361	6,084	45	521
Macon	1,884	10,172	953	2,206	13,181	6	1,103
Macoupin	658	6,684	255	410	4,552	74	127
Madison	2,764	6,389	1,110	3,716	8,957	15	1,515
Marion	602	7,481	252	602	8,197	20	218
Marshall	64	3,869	23	92	6,389	39	37
Mason	177	4,961	51	170	5,314	60	53
Massac	216	8,179	118	224	9,076	14	98
Menard	114	4,014	43	100	4,021	82	41
Mercer	67	3,866	19	57	3,883	85	22
Monroe	184	4,120	58	183	3,873	86	56
Montgomery	359	6,480	156	354	7,618	21	155
Morgan	300	5,331	109	276	5,435	58	102
Moultrie	72	3,898	35	51	2,594	96	10
Ogle	527	5,035	201	474	4,616	72	185
Peoria	4,273	14,614	2,230	4,599	16,266	4	2,491
Perry	53	1,713	8	100	3,512	90	29
Piatt	106	3,099	37	117	3,657	89	40
Pike	142	4,550	32	125	4,626	71	27
Pope	57	8,546	15	21	3,918	84	9
Pulaski	347	23,242	190	224	19,858	2	92
Putnam	69	6,680	29	57	6,319	42	18
Randolph	175	3,683	45	193	4,537	75	45
Richland	120	4,335	31	169	6,983	26	77
Rock Island	2,527	10,150	1,091	2,580	11,199	8	1,185
St. Clair	5,503	11,863	2,493	7,371	16,805	3	3,127
Saline	284	6,362	109	220	5,460	57	62
Sangamon	2,581	8,991	1,135	3,299	12,042	7	1,565
Schuyler	100	8,319	36	103	9,608	13	50
Scott	35	3,369	9	40	4,228	80	14
Shelby	180	4,135	77	133	3,741	88	47
Stark	74	6,056	25	63	6,034	48	18
Stephenson	862	10,817	443	703	9,750	10	335
Tazewell	1,148	5,744	548	1,224	6,393	38	541
Union	207	5,896	51	202	6,360	40	79
Vermilion	1,031	7,198	399	1,333	9,748	11	483
Wabash	16	729	3	118	6,307	43	57
Warren	161	5,169	58	152	5,564	54	70
Washington	92	3,938	36	84	4,100	81	16
Wayne	152	5,053	46	124	4,747	68	39
White	128	4,567	43	91	3,749	87	26
Whiteside	472	4,549	213	564	5,908	50	235
Will	6,100	7,864	2,646	6,857	6,762	29	2,716
Williamson	574	6,048	172	675	7,201	23	277
Winnebago	5,343	12,179	9,298	7,266	16,239	5	4,141
Woodford	191	2,511	67	342	4,372	78	132
State/Regional Schools			8				11
Total	127,771	6,376	58,651	166,240	8,224		67,960

Table 16: Number of students expelled, AY 1999-00 – AY 2004-05

Source: Illinois State Board of Education

Rate per 100,000 Students K-12 Enrolled

County	1999-00 Number Expelled	Rate	2004-05 Number Expelled	Rate	Rank
Adams	11	106	44	468	6
Alexander	0	0	1	81	49
Bond	4	169	4	178	24
Boone	3	39	24	257	17
Brown	0	0	0	0	72
Bureau	3	48	6	109	39
Calhoun	3	417	0	0	72
Carroll	6	189	2	75	51
Cass	0	0	7	326	12
Champaign	2	8	14	61	53
Christian	6	109	8	148	30
Clark	0	0	1	34	65
Clay	1	37	0	0	72
Clinton	0	0	0	0	72
Coles	0	0	3	44	60
Cook	787	99	1,138	145	31
Crawford	1	28	4	126	34
Cumberland	0	0	0	0	72
DeKalb	18	119	13	80	50
DeWitt	1	30	1	35	64
Douglas	0	0	0	0	72
DuPage	29	19	43	27	68
Edgar	0	0	5	155	29
Edwards	0	0	3	314	13
Effingham	20	308	12	198	21
Fayette	3	91	3	98	41
Ford	1	40	0	0	72
Franklin	1	15	1	16	71
Fulton	1	17	4	75	51
Gallatin	0	0	0	0	72
Greene	5	199	1	45	59
Grundy	11	135	9	92	45
Hamilton	0	0	1	82	48
Hancock	3	75	2	59	54
Hardin	0	0	2	295	14
Henderson	4	327	0	0	72
Henry	5	52	10	115	38
Iroquois	1	18	6	121	35
Jackson	2	25	5	68	52
Jasper	7	393	16	1,071	2
Jefferson	9	134	11	184	23
Jersey	0	0	5	177	25
JoDaviess	5	138	3	94	43
Johnson	0	0	2	116	37
Kane	84	86	89	81	49
Kankakee	8	43	17	93	44
Kendall	6	58	7	44	60
Knox	10	122	34	445	7
Lake	89	73	107	80	50
LaSalle	16	92	16	97	42
Lawrence	0	0	0	0	72

Table 16: Number of students expelled, AY 1999-00 – AY 2004-05

County	1999-00 Number Expelled	Rate	2004-05 Number Expelled	Rate	Rank
Lee	1	18	2	39	63
Livingston	4	52	6	83	47
Logan	0	0	1	28	67
McDonough	0	0	2	57	55
McHenry	10	23	27	54	56
McLean	7	30	7	31	66
Macon	17	92	92	550	5
Macoupin	21	213	21	233	19
Madison	49	113	119	287	15
Marion	9	112	12	163	27
Marshall	3	181	5	347	11
Mason	0	0	1	31	66
Massac	0	0	2	81	49
Menard	0	0	3	121	35
Mercer	4	231	1	68	52
Monroe	0	0	2	42	62
Montgomery	3	54	12	258	16
Morgan	1	18	1	20	70
Moultrie	0	0	1	51	58
Ogle	11	105	16	156	28
Peoria	192	657	325	1,149	1
Perry	0	0	4	140	32
Piatt	5	146	0	0	72
Pike	1	32	0	0	72
Pope	2	300	2	373	10
Pulaski	3	201	0	0	72
Putnam	3	290	0	0	72
Randolph	0	0	5	118	36
Richland	0	0	0	0	72
Rock Island	43	173	68	295	14
St. Clair	39	84	91	207	20
Saline	4	90	1	25	69
Sangamon	51	178	66	241	18
Schuyler	0	0	0	0	72
Scott	0	0	1	106	40
Shelby	10	230	3	84	46
Stark	4	327	0	0	72
Stephenson	18	226	29	402	9
Tazewell	28	140	78	407	8
Union	1	28	1	31	66
Vermilion	100	698	111	812	3
Wabash	0	0	1	53	57
Warren	1	32	0	0	72
Washington	0	0	4	195	22
Wayne	5	166	0	0	72
White	0	0	0	0	72
Whiteside	5	48	16	168	26
Will	124	160	135	133	33
Williamson	17	179	4	43	61
Winnebago	53	121	300	670	4
Woodford	2	26	9	115	38
Total	2,017	101	3,271	162	

Table 17: Number of high school dropouts, AY 1999-00 – AY 2004-05

Source: Illinois State Board of Education

Rate per 100,000 High School Students Enrolled

County	1999-00	Rate	2004-05	Rate	Rank
Adams	108	3,579	104	3,856	18
Alexander	16	4,030	13	2,539	48
Bond	30	4,201	26	3,720	19
Boone	35	1,590	79	2,949	37
Brown	6	2,127	6	2,500	49
Bureau	85	4,404	45	2,576	46
Calhoun	3	1,145	6	2,041	66
Carroll	30	3,039	23	2,193	61
Cass	22	3,318	27	2,792	40
Champaign	329	4,720	213	2,910	38
Christian	90	5,421	71	3,671	20
Clark	39	4,243	28	2,966	35
Clay	42	5,296	17	2,234	60
Clinton	43	3,134	40	2,839	39
Coles	163	6,983	85	4,191	14
Cook	19,131	9,384	16,418	7,215	3
Crawford	30	2,654	23	2,074	65
Cumberland	11	1,735	5	780	99
DeKalb	109	2,493	80	1,549	83
DeWitt	54	5,636	32	3,323	28
Douglas	34	3,512	14	1,396	91
DuPage	1,179	2,625	770	1,493	85
Edgar	37	3,416	15	1,852	74
Edwards	5	1,602	5	1,667	78
Effingham	24	1,203	20	902	97
Fayette	35	3,820	29	3,085	32
Ford	23	2,933	22	2,686	42
Franklin	79	4,045	45	2,322	57
Fulton	91	5,214	51	3,038	33
Gallatin	13	4,659	5	1,953	70
Greene	36	4,627	18	2,192	62
Grundy	98	3,332	77	2,188	63
Hamilton	25	5,720	7	1,190	94
Hancock	36	2,750	15	1,264	93
Hardin	12	5,581	13	7,222	2
Henderson	25	6,476	11	3,134	31
Henry	109	3,786	70	2,294	58
Iroquois	75	4,280	58	3,524	23
Jackson	72	2,895	54	2,281	59
Jasper	21	3,354	15	2,385	51
Jefferson	74	3,758	93	4,918	10
Jersey	55	5,083	11	1,064	95
JoDaviess	34	3,052	18	1,659	80
Johnson	8	1,478	8	1,473	88
Kane	1,093	4,325	1,054	3,441	26
Kankakee	174	3,527	157	2,962	36
Kendall	84	2,799	66	1,467	89
Knox	113	4,675	79	3,329	27
Lake	1,093	3,272	750	1,845	75
LaSalle	396	7,214	167	3,026	34
Lawrence	52	7,344	37	5,286	7

Table 17: Number of high school dropouts, AY 1999-00 – AY 2004-05

County	1999-00	Rate	2004-05	Rate	Rank
Lee	104	6,212	35	1,964	69
Livingston	89	3,699	52	2,131	64
Logan	60	4,538	22	1,626	81
McDonough	36	2,900	43	3,542	22
McHenry	369	3,058	284	1,832	76
McLean	267	4,254	212	3,180	29
Macon	341	6,830	239	4,949	9
Macoupin	158	5,168	100	4,172	15
Madison	752	5,703	478	3,495	24
Marion	222	8,286	150	6,012	5
Marshall	20	4,024	7	1,499	84
Mason	49	4,609	20	2,014	67
Massac	56	8,011	19	2,540	47
Menard	27	3,308	15	1,740	77
Mercer	12	2,131	5	1,059	96
Monroe	33	2,322	20	1,301	92
Montgomery	66	4,000	33	1,980	68
Morgan	84	4,802	46	2,645	45
Moultrie	19	3,339	25	4,119	16
Ogle	86	2,684	83	2,363	54
Peoria	590	7,161	701	8,358	1
Perry	40	3,980	23	2,340	55
Piatt	24	2,262	15	1,491	86
Pike	39	4,234	33	3,882	17
Pope	11	5,527	7	4,403	12
Pulaski	21	5,011	3	789	98
Putnam	11	3,630	7	2,373	53
Randolph	57	3,481	46	3,136	30
Richland	35	3,833	12	1,425	90
Rock Island	519	6,919	257	3,574	21
St. Clair	593	4,474	584	4,304	13
Saline	78	6,393	43	3,468	25
Sangamon	271	3,274	159	1,930	72
Schuyler	4	1,146	0	0	100
Scott	10	3,174	5	1,661	79
Shelby	48	3,641	28	2,339	56
Stark	13	3,621	7	2,682	43
Stephenson	131	5,360	65	2,648	44
Tazewell	185	2,980	172	2,839	39
Union	52	5,273	15	1,493	85
Vermilion	315	8,114	212	5,676	6
Wabash	30	4,160	26	4,506	11
Warren	38	3,803	17	1,567	82
Washington	31	4,062	16	1,893	73
Wayne	33	3,642	23	2,700	41
White	46	5,197	46	5,233	8
Whiteside	158	5,171	74	2,374	52
Will	699	3,356	425	1,488	87
Williamson	81	2,889	72	2,441	50
Winnebago	689	5,967	940	7,210	4
Woodford	45	1,933	50	1,932	71
Total	33,328	6157	27,066	4,435	

Table 18: Number and sex of truant, minors in need of supervision, AY 1999-00 – AY 2004-05

Source: Illinois State Board of Education
Rate per 100,000 Students K-12 Enrolled

County	1999-00 Male	1999-00 Female	1999-00 Total	Rate	2004-05 Male	2004-05 Female	2004-05 Total	Rate	Rank
Adams	23	28	51	489	109	105	214	2,275	8
Alexander	42	43	85	5,081	6	6	12	978	33
Bond	7	2	9	381	2	2	4	178	92
Boone	43	40	83	1,087	76	73	149	1,597	20
Brown	0	0	0	0	3	0	3	427	68
Bureau	7	13	20	319	18	11	29	528	61
Calhoun	6	12	18	2,500	1	1	2	300	80
Carroll	0	0	0	0	1	2	3	112	96
Cass	6	10	16	705	18	10	28	1,304	26
Champaign	16	23	39	163	60	60	120	524	62
Christian	22	16	38	692	32	39	71	1,313	25
Clark	6	3	9	289	7	12	19	639	47
Clay	16	17	33	1,211	10	10	20	839	39
Clinton	27	23	50	882	5	6	11	212	86
Coles	86	58	144	2,034	62	53	115	1,692	17
Cook	5,145	4,198	9,343	1,171	2,507	1,928	4,435	566	57
Crawford	11	10	21	582	32	26	58	1,827	16
Cumberland	2	2	4	194	0	0	0	0	100
DeKalb	32	29	61	402	28	47	75	463	64
DeWitt	14	8	22	668	12	6	18	637	48
Douglas	5	3	8	254	1	0	1	36	99
DuPage	236	208	444	290	235	159	394	247	82
Edgar	12	7	19	511	13	9	22	682	44
Edwards	0	0	0	0	5	5	10	1,046	30
Effingham	15	11	26	401	8	4	12	198	88
Fayette	14	18	32	969	36	40	76	2,489	6
Ford	0	4	4	161	6	5	11	434	67
Franklin	32	32	64	981	36	30	66	1,051	29
Fulton	30	19	49	832	17	14	31	582	54
Gallatin	4	4	8	783	30	24	54	6,257	2
Greene	1	1	2	80	9	8	17	767	41
Grundy	19	37	56	687	23	15	38	389	73
Hamilton	7	8	15	1,062	1	0	1	82	97
Hancock	18	15	33	829	2	6	8	236	83
Hardin	1	3	4	599	3	1	4	589	52
Henderson	1	4	5	409	3	3	6	567	56
Henry	18	10	28	293	24	26	50	575	55
Iroquois	12	8	20	358	13	19	32	644	46
Jackson	19	27	46	579	59	48	107	1,460	22
Jasper	4	0	4	224	5	1	6	402	71
Jefferson	64	46	110	1,641	101	53	154	2,575	5
Jersey	27	10	37	1,156	0	0	0	0	100
JoDaviess	2	1	3	83	3	4	7	220	85
Johnson	5	1	6	332	11	5	16	926	35
Kane	334	335	669	686	182	174	356	323	79
Kankakee	99	116	215	1,161	180	153	333	1,831	15
Kendall	10	22	32	311	29	30	59	369	75
Knox	29	39	68	830	28	23	51	668	45
Lake	1,921	2,012	3,933	3,224	1,210	982	2,192	1,629	18
LaSalle	76	58	134	774	46	53	99	598	51
Lawrence	21	15	36	1,466	5	3	8	350	77

Table 18: Number and sex of truant, minors in need of supervision, AY 1999-00 – AY 2004-05

County	1999-00 Male	1999-00 Female	1999-00 Total	Rate	2005-05 Male	2004-05 Female	2004-05 Total	Rate	Rank
Lee	12	10	22	398	9	8	17	334	78
Livingston	12	17	29	379	7	13	20	275	81
Logan	22	23	45	1,139	17	17	34	944	34
McDonough	26	25	51	1,233	34	15	49	1,387	24
McHenry	22	12	34	79	62	35	97	193	89
McLean	16	19	35	152	52	70	122	545	59
Macon	41	39	80	432	331	294	625	3,734	4
Macoupin	45	42	87	884	20	21	41	455	65
Madison	450	394	844	1,951	530	409	939	2,263	9
Marion	59	24	83	1,031	39	24	63	858	38
Marshall	3	7	10	605	0	3	3	208	87
Mason	31	35	66	1,850	11	22	33	1,032	31
Massac	7	5	12	454	3	9	12	486	63
Menard	0	3	3	106	8	9	17	684	43
Mercer	0	0	0	0	2	0	2	136	94
Monroe	3	4	7	157	4	2	6	127	95
Montgomery	18	16	34	614	13	20	33	710	42
Morgan	42	26	68	1,208	39	42	81	1,595	21
Moultrie	4	8	12	650	4	4	8	407	70
Ogle	14	12	26	248	11	8	19	185	91
Peoria	317	235	552	1,888	323	283	606	2,143	12
Perry	13	11	24	776	11	5	16	562	58
Piatt	1	1	2	58	0	5	5	156	93
Pike	23	12	35	1,121	17	16	33	1,221	27
Pope	2	3	5	750	0	1	1	187	90
Pulaski	17	13	30	2,009	25	25	50	4,433	3
Putnam	0	0	0	0	2	0	2	222	84
Randolph	19	20	39	821	10	6	16	376	74
Richland	3	6	9	325	6	7	13	537	60
Rock Island	212	205	417	1,675	288	249	537	2,331	7
St. Clair	419	346	765	1,649	499	464	963	2,196	10
Saline	26	13	39	874	19	28	47	1,167	28
Sangamon	330	288	618	2,153	317	226	543	1,982	14
Schuyler	0	0	0	0	0	0	0	0	100
Scott	0	5	5	481	3	1	4	423	69
Shelby	3	6	9	207	7	9	16	450	66
Stark	4	2	6	491	8	9	17	1,628	19
Stephenson	27	27	54	678	30	26	56	777	40
Tazewell	28	42	70	350	36	39	75	392	72
Union	14	20	34	968	9	19	28	882	36
Vermilion	179	168	347	2,423	148	147	295	2,157	11
Wabash	2	2	4	182	11	16	27	1,443	23
Warren	16	14	30	963	6	10	16	586	53
Washington	3	6	9	385	11	7	18	878	37
Wayne	6	2	8	266	0	2	2	77	98
White	18	9	27	963	10	15	25	1,030	32
Whiteside	23	18	41	395	23	12	35	367	76
Will	95	85	180	232	1,215	936	2,151	2,121	13
Williamson	49	41	90	948	24	35	59	629	49
Winnebago	784	695	1,479	3,371	2,651	2,204	4,855	10,851	1
Woodford	8	12	20	263	22	26	48	614	50
State/ regional school	178	110	288	N/A	118	94	212	N/A	N/A
Total	12,193	10,747	22,940	1,145	12,358	10,241	22,599	1,118	

Table 19: Number of reported crimes against school personnel, CY00 – CY05

Source: Illinois State Police

Rate per 100,000 Persons in the General Population

County	2000	Rate	2005	Rate	Rank
Adams	2	2.93	0	0.00	36
Alexander	0	0.00	0	0.00	36
Bond	0	0.00	0	0.00	36
Boone	0	0.00	0	0.00	36
Brown	0	0.00	0	0.00	36
Bureau	0	0.00	0	0.00	36
Calhoun	0	0.00	0	0.00	36
Carroll	1	6.02	1	6.22	19
Cass	0	0.00	1	7.20	18
Champaign	40	22.25	34	18.39	8
Christian	0	0.00	2	5.69	21
Clark	0	0.00	0	0.00	36
Clay	0	0.00	0	0.00	36
Clinton	0	0.00	0	0.00	36
Coles	0	0.00	1	1.96	30
Cook	1,017	18.91	2,676	50.46	2
Crawford	0	0.00	0	0.00	36
Cumberland	0	0.00	0	0.00	36
DeKalb	8	8.96	1	1.02	34
DeWitt	0	0.00	0	0.00	36
Douglas	0	0.00	0	0.00	36
DuPage	34	3.75	21	2.26	28
Edgar	0	0.00	1	5.22	23
Edwards	0	0.00	0	0.00	36
Effingham	1	2.92	6	17.35	10
Fayette	0	0.00	0	0.00	36
Ford	0	0.00	0	0.00	36
Franklin	0	0.00	0	0.00	36
Fulton	5	13.08	4	10.61	16
Gallatin	0	0.00	0	0.00	36
Greene	0	0.00	0	0.00	36
Grundy	3	7.96	0	0.00	36
Hamilton	0	0.00	0	0.00	36
Hancock	0	0.00	0	0.00	36
Hardin	0	0.00	0	0.00	36
Henderson	0	0.00	0	0.00	36
Henry	1	1.96	2	3.95	25
Iroquois	0	0.00	0	0.00	36
Jackson	0	0.00	13	22.43	6
Jasper	0	0.00	0	0.00	36
Jefferson	1	2.50	0	0.00	36
Jersey	3	13.85	4	17.81	9
JoDaviess	0	0.00	0	0.00	36
Johnson	0	0.00	0	0.00	36
Kane	12	2.94	8	1.66	32
Kankakee	2	1.93	0	0.00	36
Kendall	0	0.00	0	0.00	36
Knox	6	10.76	6	11.26	13
Lake	17	2.62	13	1.85	31
LaSalle	4	3.59	0	0.00	36
Lawrence	0	0.00	0	0.00	36

Table 19: Number of reported crimes against school personnel, CY00 – CY05

County	2000	Rate	2005	Rate	Rank
Lee	0	0.00	0	0.00	36
Livingston	2	5.04	1	2.55	27
Logan	0	0.00	0	0.00	36
McDonough	0	0.00	0	0.00	36
McHenry	2	0.76	0	0.00	36
McLean	1	0.66	17	10.69	15
Macon	31	27.08	19	17.25	11
Macoupin	0	0.00	1	2.04	29
Madison	97	37.44	56	21.19	7
Marion	1	2.40	0	0.00	36
Marshall	0	0.00	0	0.00	36
Mason	0	0.00	0	0.00	36
Massac	0	0.00	0	0.00	36
Menard	0	0.00	0	0.00	36
Mercer	0	0.00	0	0.00	36
Monroe	0	0.00	0	0.00	36
Montgomery	1	3.26	1	3.29	26
Morgan	18	49.17	18	50.39	3
Moultrie	0	0.00	0	0.00	36
Ogle	7	13.68	3	5.53	22
Peoria	92	50.22	172	94.34	1
Perry	1	4.34	1	4.38	24
Piatt	1	6.11	0	0.00	36
Pike	0	0.00	0	0.00	36
Pope	0	0.00	0	0.00	36
Pulaski	0	0.00	0	0.00	36
Putnam	0	0.00	0	0.00	36
Randolph	0	0.00	0	0.00	36
Richland	1	6.20	0	0.00	36
Rock Island	2	1.34	0	0.00	36
St. Clair	16	6.25	30	11.54	12
Saline	0	0.00	0	0.00	36
Sangamon	83	43.90	79	40.98	4
Schuyler	0	0.00	0	0.00	36
Scott	0	0.00	0	0.00	36
Shelby	1	4.38	0	0.00	36
Stark	0	0.00	0	0.00	36
Stephenson	3	6.13	0	0.00	36
Tazewell	6	4.67	14	10.77	14
Union	0	0.00	0	0.00	36
Vermilion	5	5.96	21	25.50	5
Wabash	0	0.00	0	0.00	36
Warren	0	0.00	1	5.70	20
Washington	1	6.59	0	0.00	36
Wayne	0	0.00	0	0.00	36
White	2	13.04	0	0.00	36
Whiteside	0	0.00	0	0.00	36
Will	7	1.38	7	1.09	33
Williamson	1	1.63	6	9.43	17
Winnebago	2	0.72	1	0.35	35
Woodford	0	0.00	0	0.00	36
Total	1,541	12.61	3,242	25.90	